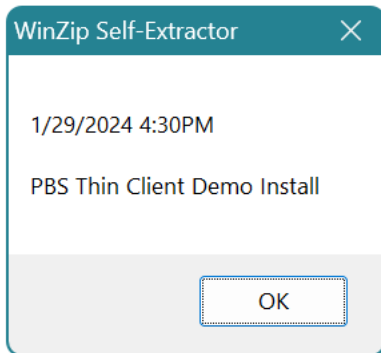


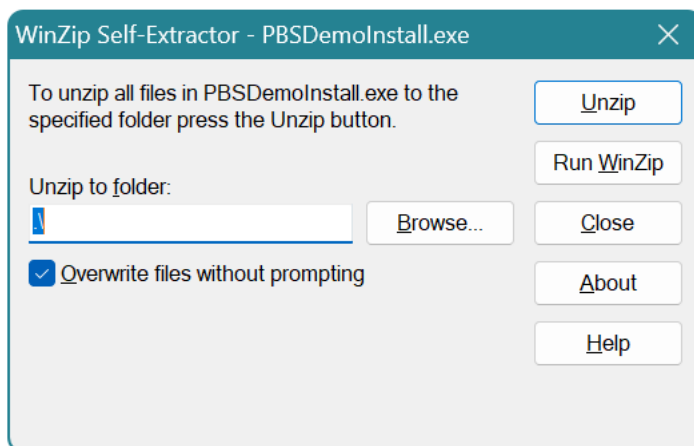
## PBS Demo system installation

For a PBS Manufacturing demo, please contact Dave Dorsey, Sr. Manufacturing Sales Consultant. 800-969-7900 x145 or [ddorsey@pass-port.com](mailto:ddorsey@pass-port.com)

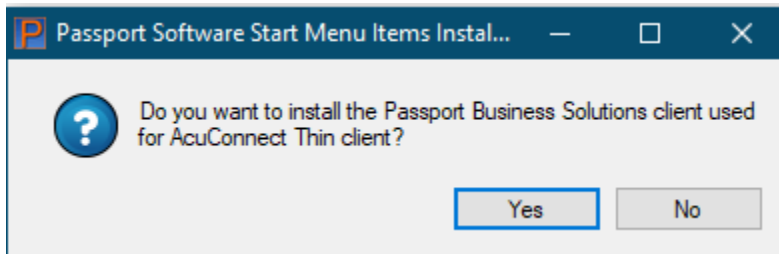
1. Create a new folder on your C Drive called "PBSdemo". Please avoid spaces in the folder name.
2. Next, click the link to download the PBS demo. It will ask where to save the download. Save it into the new folder you just created.  
Note: If this is the first time you are installing the PBS demo, prepare to be able to re-start your computer to complete the installation. You may wish to close any open programs on your desktop.
3. Go to the new folder you created.
4. Click the self-extracting file, PBSDemoInstall.exe, and Click on OK as shown in the image below.



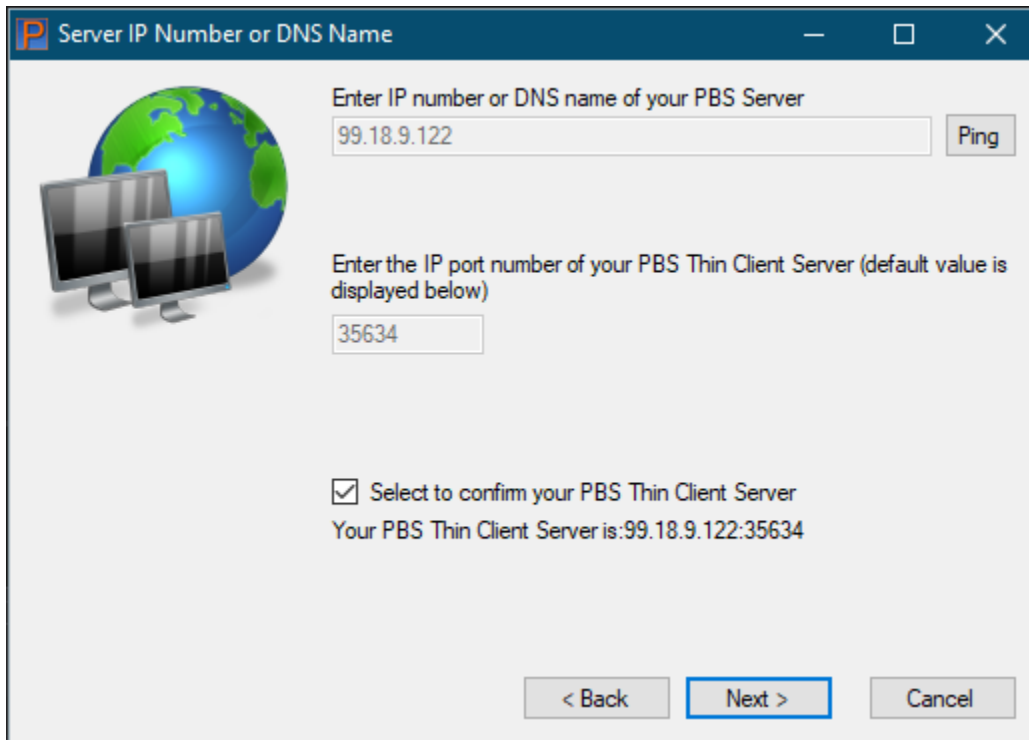
5. When this next screen displays, called "WinZip Self extractor", click on the Unzip button. Next, click the Browse button to find the new "PBSdemo" folder you created above.



6. Go to the PBSdemo folder. Find and click on the PBSTCMFI\_DEMO.exe file.
7. On the next screen (see below image), select "Yes".



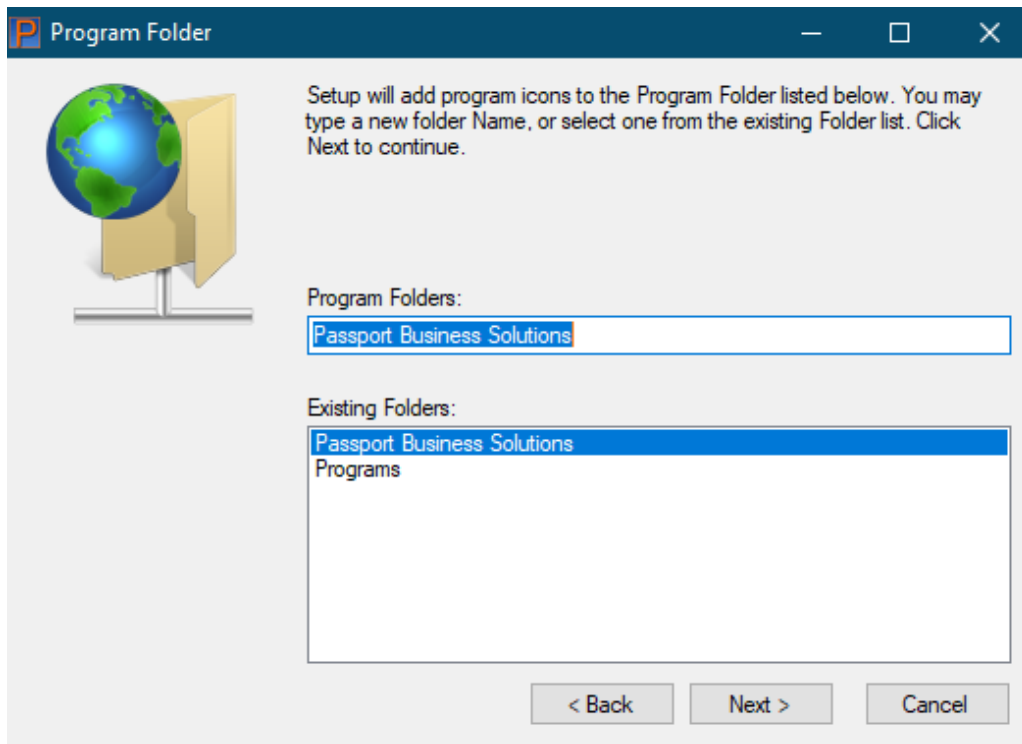
8. Next, make sure your screen matches this screen below:



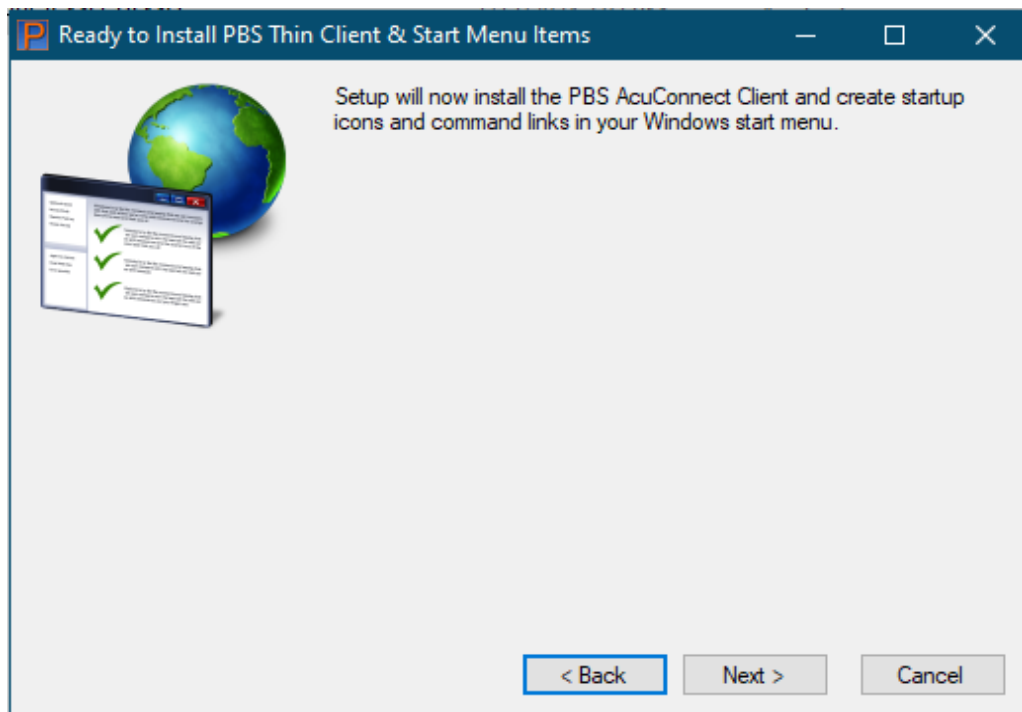
The numbers cannot be changed. They point to Passport Software’s PBS Demo Server. Make sure there is a check mark in the “Select to confirm your PBS Thin Client Server”.

Click Next

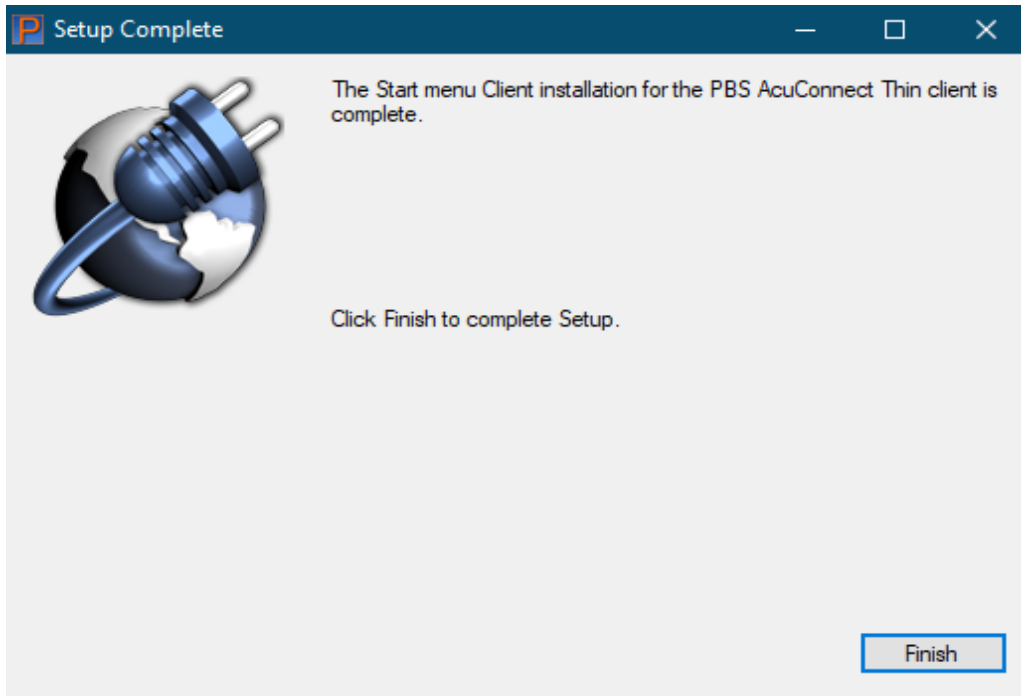
9. Click “next” through the next 2 screens.



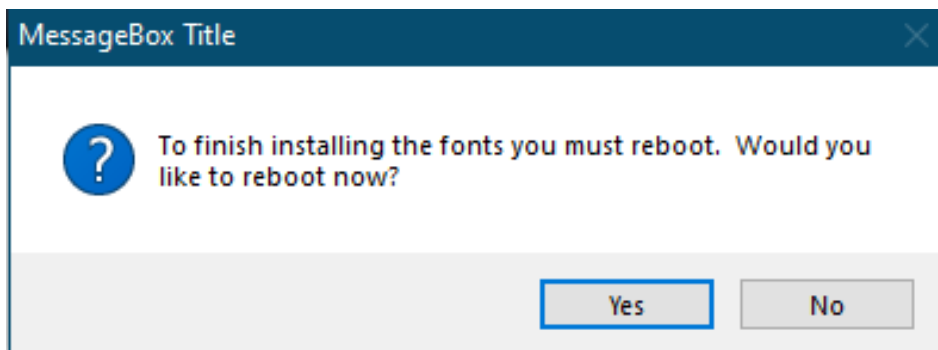
Click Next



10. Click Next and Finish

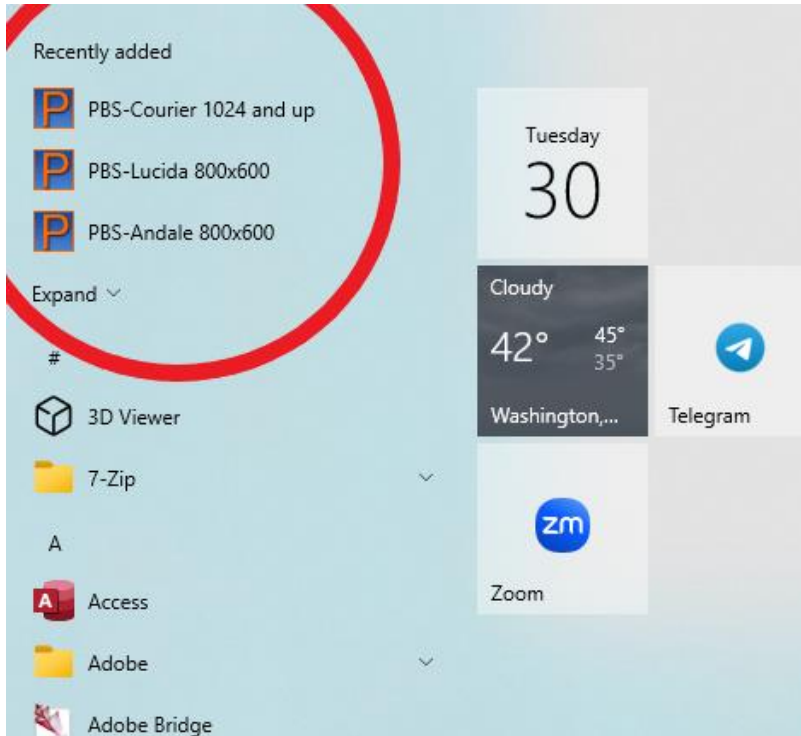


11. Ensure any programs running on your desktop are closed. Then, to complete the demo installation click Yes to restart your computer.

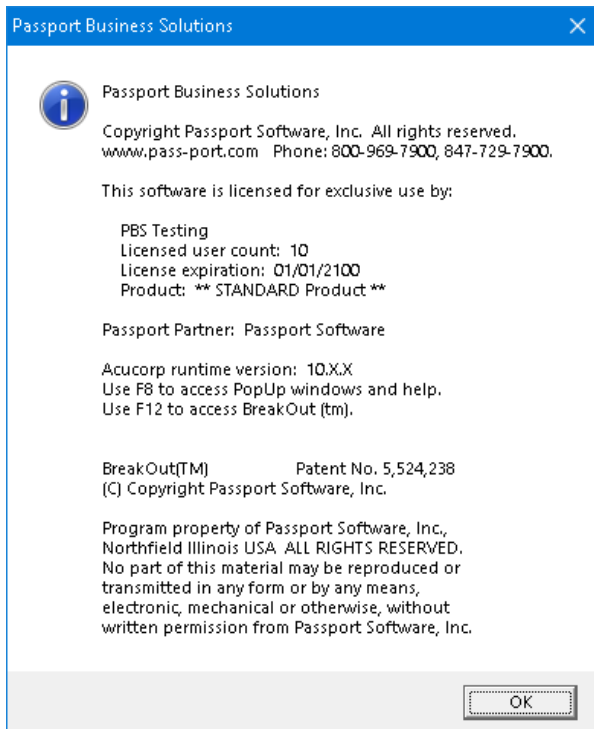


When your computer has rebooted:

To launch your PBS demo, click the Start button in the lower left corner of your screen. At the very top, under the “Recently added” section, there will be some fonts listed. Select any font to launch the PBS demo.



12. Click Ok to accept the license terms

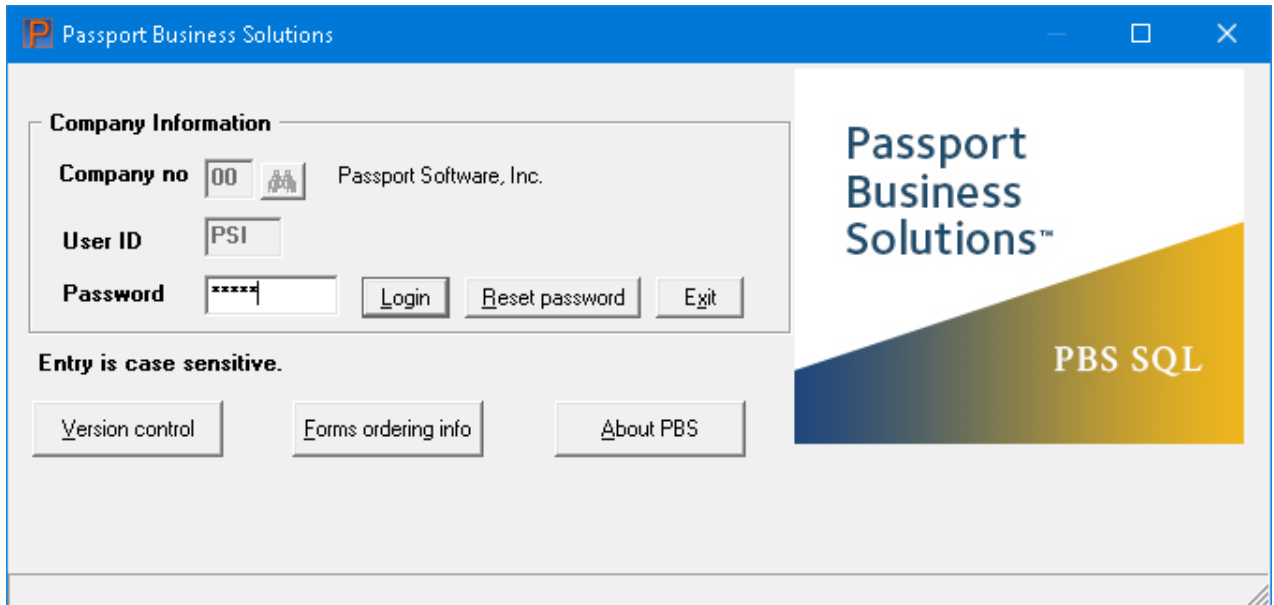


Log into the PBS demo using these credentials:

Company no = **00**

User ID = **PBS**

Password = **DemoUser (credentials are case-sensitive)**



The screenshot shows a Windows application window titled "Passport Business Solutions". The window contains a login form with the following fields and buttons:

- Company Information** section:
  - Company no**: Input field with "00" and a dropdown arrow, followed by the text "Passport Software, Inc."
  - User ID**: Input field with "PSI"
  - Password**: Input field with "\*\*\*\*\*", followed by "Login", "Reset password", and "Exit" buttons.
- A note: "Entry is case sensitive."
- Bottom navigation buttons: "Version control", "Forms ordering info", and "About PBS".
- Right sidebar: "Passport Business Solutions™" logo and "PBS SQL" text on a blue and yellow background.